

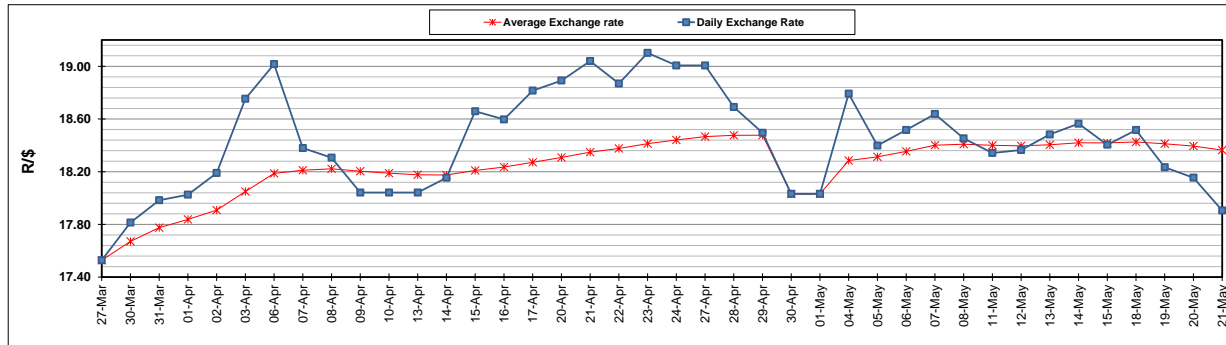
	PETROL 95 ULP	PETROL 93 ULP & LRP	DIESEL 0.05%	DIESEL 0.005%	ILL. PAR.
GAUTENG PUMP PRICE (SA c/l) AS FROM 06/05/2020	1,222.000	1,202.000	-	-	-
WHOLESALE PRICE (SA c/l) AS FROM 06/05/2020	-	-	1,108.560	1,117.960	449.828
SINGLE NATIONAL MAXIMUM RETAIL PRICE	-	-	-	-	543.000
BASIC FUEL PRICE - 21/05/2020 (SA c/l)	488.414	466.258	479.282	485.963	425.394
PRESS RELEASE CONTRIBUTION TO BFP 06/05/2020 - 21/05/2020 (SA c/l)	274.770	264.770	357.630	367.030	245.128
UNIT OVER/(UNDER) RECOVERY - 21/05/2020 (SA c/l)	(213.644)	(201.488)	(121.652)	(118.933)	(180.266)
AVERAGE BASIC FUEL PRICE 30/04/2020 - 21/05/2020	416.127	397.810	394.924	403.882	299.938
AVERAGE UNIT OVER/(UNDER) RECOVERY 30/04/2020 - 21/05/2020	(97.857)	(89.540)	2.956	2.149	0.940

ANALYSIS MOVEMENT OF AVERAGE OVER/(UNDER) RECOVERY

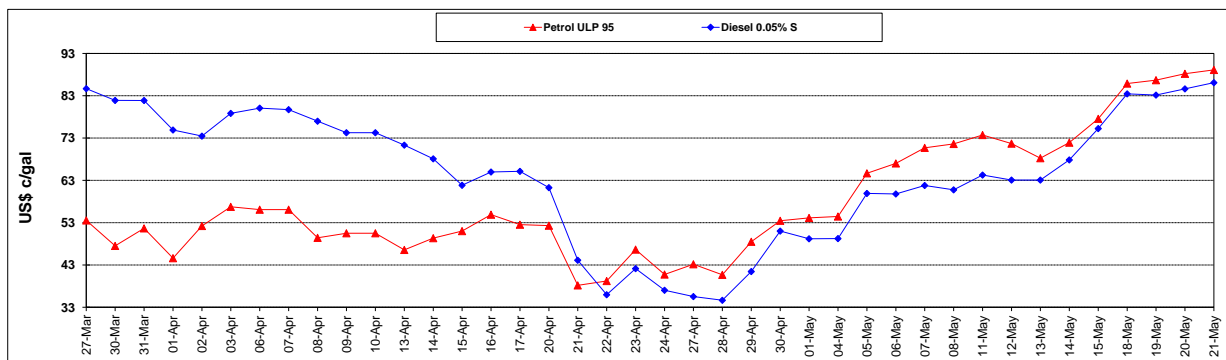
	PETROL 95	PETROL 93	DIESEL 0.05%	DIESEL 0.005%	ILL. PAR.
- MOVEMENT IN INTERNATIONAL PRODUCT PRICES	(100.411)	(91.981)	0.532	(0.331)	(0.901)
- MOVEMENT IN EXCHANGE RATE	2.554	2.441	2.424	2.479	1.841
AVERAGE UNIT OVER/(UNDER) RECOVERY 30/04/2020 - 21/05/2020	(97.857)	(89.540)	2.956	2.149	0.940

R/\$ EXCHANGE RATE - (R/\$17.9055 - 21/05/2020)

EXCHANGE RATE USED IN BASIC FUEL PRICE



INTERNATIONAL PRODUCT PRICES OF BASKET USED IN BASIC FUEL PRICE



BASIC FUEL PRICE IN SA CENTS PER LITRE

